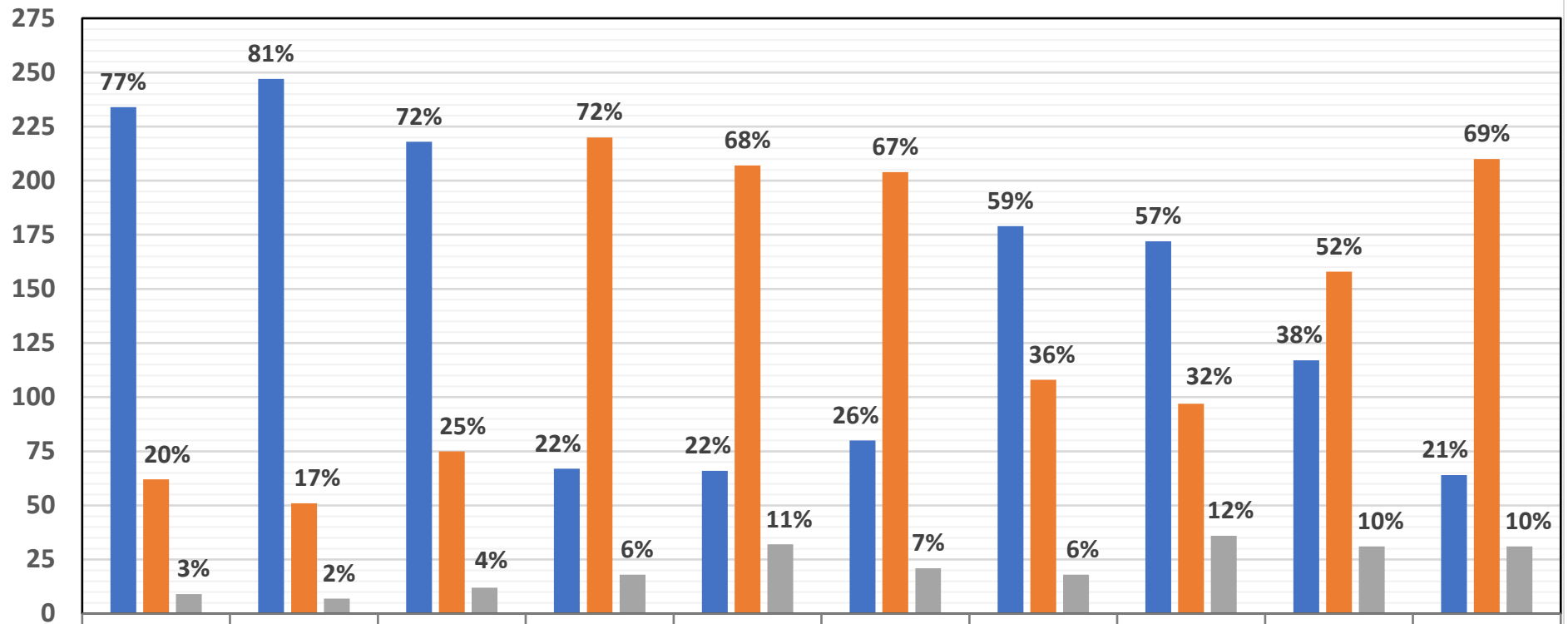


PALO CEDRO PLANNING STRATEGY SURVEY RESULTS



	Q1 - Limit retail hours of operation	Q2 - Limit size (floor area and/or height) of retail buildings	Q3 - Establish design standards for commercial development	Q4 - Permit retail outdoor storage/sales by-right	Q5 - Permit mixed-use development in commercial zones by-right	Q6 - Permit senior housing in commercial zones by-right	Q7 - Prepare a specific plan or community plan for the Palo Cedro town center area	Q8 - Maintain Palo Cedro's existing general plan land use designations / zoning classifications and regulations	Q9 - Prohibit future Planned Development zone amendments in PC	Q10 - Permit additional commercial uses not allowed currently by-right
■ SUPPORT	234	247	218	67	66	80	179	172	117	64
■ OPPOSE	62	51	75	220	207	204	108	97	158	210
■ LEFT BLANK	9	7	12	18	32	21	18	36	31	31