



# 2023

---

# ANNUAL REPORT

# TABLE OF CONTENTS

MISSION STATEMENTS / VISION STATEMENTS	PG. 3
SHASTA COUNTY FIRE DEPT. VALUES	PG. 4
MESSAGE FROM THE CHIEF	PG. 5
ORGANIZATIONAL CHART	PG. 7
VOLUNTEER YEARS OF SERVICE	PG. 8
SHASTA COUNTY FIRE DEPT. STATISTICS	PG. 9
CAL FIRE STATISTICS	PG. 9
PREVENTION STATISTICS	PG. 10
FIRE PREVENTION/ LAW ENFORCEMENT	PG. 11
EMERGENCY COMMAND CENTER HIGHLIGHTS	PG. 12
TRAINING HIGHLIGHTS	PG. 13
FIRE MARSHAL PROTECTION PLAN	PG. 14-15
FLEET SERVICES	PG. 16
SERVICE CENTER	PG. 17
MANAGEMENT SUPPORT STAFF	PG. 18-19
BATTALION 1	PG. 20-21
BATTALION 2	PG. 22-23
BATTALION 3	PG. 24-25
BATTALION 4	PG. 26-28
BATTALION 5	PG. 29-30
BATTALION 7	PG. 31-32
SHASTA CASCADE HAZARDOUS MATERIALS TEAM	PG. 33
SHASTA COUNTY FIRE DEPARTMENT BOAT	PG. 34
REDDING AIR ATTACK BASE	PG. 35
SHASTA COUNTY FIRE DEPARTMENT EMS	PG. 36

# MISSION STATEMENT

---

TO STAND READY TO PROTECT LIFE, PROPERTY,  
AND THE ENVIRONMENT UTILIZING TRAINED AND EQUIPPED  
PERSONNEL. THE MISSION INCLUDES STRUCTURAL AND  
WILDLAND FIRE CONTROL, FIRST RESPONSE MEDICAL CARE,  
AND APPROPRIATE ASSISTANCE TO OTHER AGENCIES  
DURING EMERGENCY INCIDENTS.

# VISION STATEMENT

---

TO PROVIDE EMERGENCY SERVICE TO THE  
COMMUNITIES OF SHASTA COUNTY  
AND PROVIDE MUTUAL AID TO ALLIED AGENCIES  
FOR THE COMMON GOOD  
OF THE CITIZENS OF SHASTA COUNTY.

# SHASTA COUNTY FIRE DEPARTMENT VALUES

## SERVICE

---

- ♦ WE ARE COMMITTED TO THE SAFETY AND WELL-BEING OF THE PUBLIC AND OUR EMPLOYEES.
- ♦ WE ARE COMMITTED TO OUR VOLUNTEER AND CAREER WORKFORCE AND STRIVE TO SUPPORT ITS TRAINING AND ADMINISTRATIVE NEEDS.
- ♦ WE STRIVE FOR EXCELLENCE AND PROFESSIONALISM.

## COOPERATION

---

- ♦ WE CONTINUE TO IMPROVE COOPERATIVE RELATIONSHIPS WITHIN COUNTY PROGRAMS AND ALLIED AGENCIES.
- ♦ WE MAINTAIN AND ENHANCE COOPERATIVE AGREEMENTS, FOCUSING ON WHAT IS BEST FOR THE COMMUNITY.
- ♦ WE CONTINUE TO BUILD A SUPPORT STRUCTURE THAT ENABLES AND ENCOURAGES VOLUNTEERISM

## PROTECTION

---

- ♦ WE PROVIDE THE EQUIPMENT, TRAINING, AND RESOURCES TO OUR EMPLOYEES THAT ENABLE THEM TO SERVE THE LOCAL COMMUNITIES.
- ♦ WE VALUE THE DIVERSITY THAT EACH EMPLOYEE BRINGS TO THE DEPARTMENT.
- ♦ WE RECOGNIZE THE IMPORTANCE OF CLEAR COMMUNICATION TO ALL EMPLOYEES AND COOPERATING AGENCIES.
- ♦ WE PROVIDE TRAINING AND SUPPORT TO THE WORKFORCE, WHICH PROMOTES A CALM RESILIENCE DURING EMERGENCIES.





## A MESSAGE FROM THE CHIEF

---

On behalf of the Shasta County Fire Department, It is my pleasure to present to you our 2023 Annual Report, which highlights our continued dedication to serving the community and achieving our objectives outlined in the Department's "2020 master plan." This report offers insights into our department's activities throughout the year and underscores our unwavering commitment to providing exceptional service to the residents of Shasta County.

Our team of highly trained and hardworking professionals, comprising both volunteer and career fire-fighters, remains steadfast in our mission to exceed the expectations of the public. Their dedication and

tireless efforts are the cornerstone of our ability to deliver outstanding service day in and day out.

Within the pages of this report, you will find updates on our progress towards the goals and objectives outlined in our master plan. From enhancing our emergency response capabilities to implementing innovative fire prevention initiatives, we continue to strive for excellence in every aspect of our operations.

I am honored to lead such a dedicated and passionate team of individuals who are committed to making a positive difference in our community. Together, we work tirelessly to ensure the safety and well-being of our fellow residents. We are deeply grateful for the guidance and support of our elected officials, who have prioritized the allocation of resources to empower our department. Their continued investment in our capabilities enables us to deliver the highest level of emergency response and fire prevention services to the community we serve.

As we look ahead to 2024, I want to assure you that our commitment to serving the residents of Shasta County remains unwavering. We will continue to adapt and evolve to meet the ever-changing needs of our community, always striving to exceed your expectations.

Thank you for your continued support and trust in the Shasta County Fire Department. Together, we will continue to work towards a safer and stronger community for all.

Sincerely,

Sean O'Hara

A handwritten signature in blue ink, appearing to read "SOH", written over a horizontal line.

FIRE CHIEF SHASTA COUNTY FIRE DEPARTMENT

# SHASTA COUNTY BOARD OF SUPERVISORS



**KEVIN W. CRYE**

**DISTRICT 1**

**REDDING**

**TIM GARMAN**

**DISTRICT 2**

**CENTERVILLE, FRENCH GULCH,  
IGO/ONO, KESWICK, PLATINA, SHASTA,  
SOUTH REDDING, VERDE VALE**



**MARY RICKERT**

**DISTRICT 3**

**BELLA VISTA, BIG BEND, BURNEY, CASSEL, FALL RIVER MILLS,  
HAT CREEK, MCARTHUR, MONTGOMERY CREEK, OAK RUN,  
OLD STATION, PALO CEDRO, PITTVILLE, ROUND MOUNTAIN,  
WHITMORE**

**PATRICK HENRY JONES**

**DISTRICT 4**

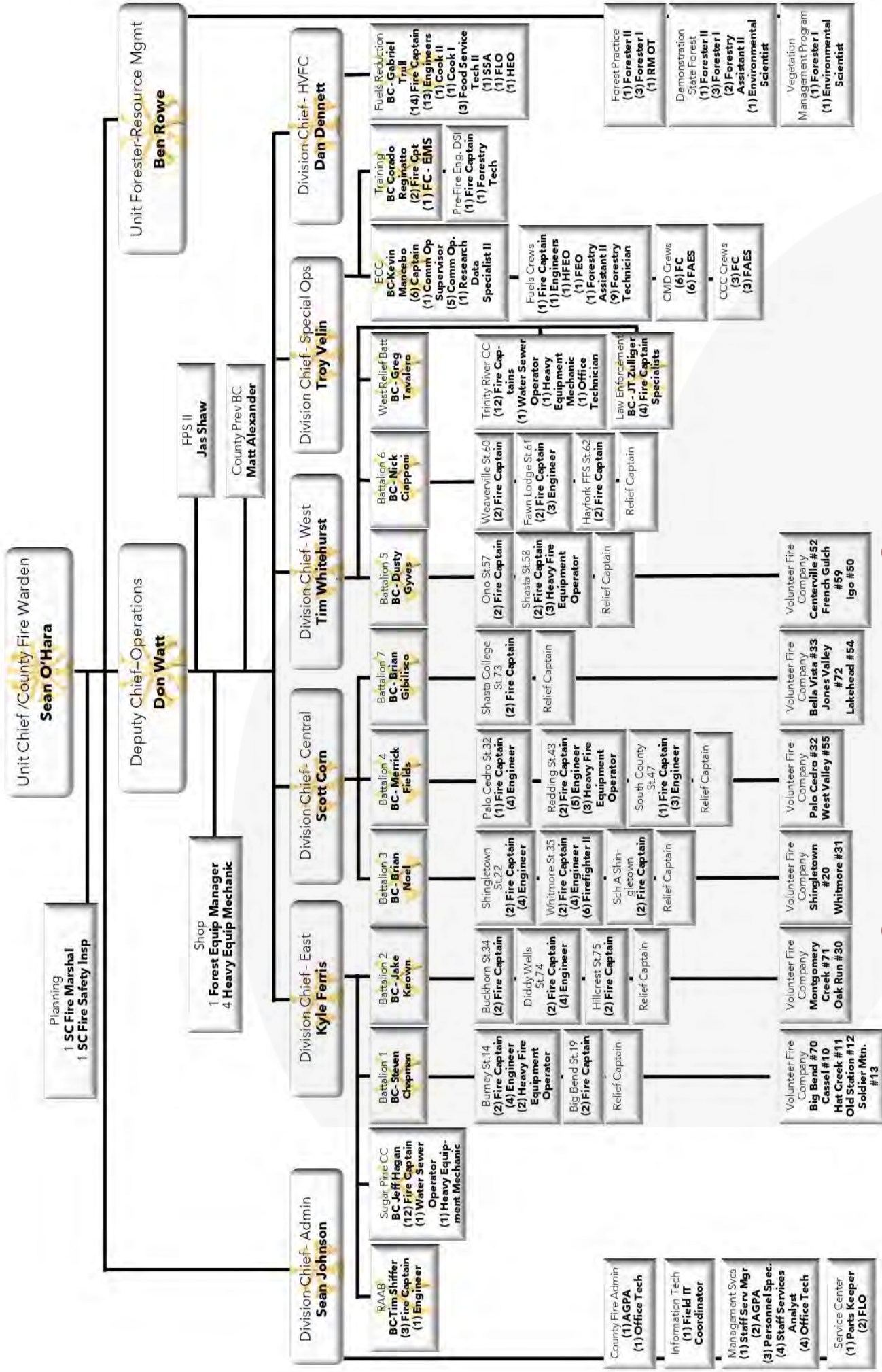
**CASTELLA, CRAG VIEW, LAKEHEAD, SHASTA LAKE,  
MOUNTAIN GATE, JONES VALLEY**



**CHRIS KELSTROM**

**DISTRICT 5**

**ANDERSON, COTTONWOOD, MILLVILLE,  
MANTON, SHINGLETOWN, VIOLA, HAPPY VALLEY**



# ORGANIZATIONAL CHART



# VOLUNTEER APPRECIATION

## 10 YEARS OF SERVICE

GEOFF UNANGST | Big Bend  
PENNY RODGERS | Soldier Mtn.  
THOMAS DODSON | Shingletown  
WOODY POLLARD | Centerville  
SHAWN SHERRIFF | Jones Valley  
JOSHUA PATRICK | Whitmore  
JOHN LUNTEY III | Centerville  
★ JOHN ALLEN | Igo ★  
EVE ALLEN | Igo ★  
MICHAEL BOWLING | Shingletown  
KEVIN CLAY JR. | West Valley  
TRACY CLAY | West Valley  
ROBERT MAXEY | Oak Run

## 15 YEARS OF SERVICE

PATRICIA WYCKOFF  
West Valley  
FREDERICK WYCKOFF  
West Valley  
★ SHAWN PLUMMER ★  
West Valley  
★ SARA WEST ★  
Whitmore  
★ DANIEL PRUITT ★  
West Valley  
WENDY CROSS FINLEY  
French Gulch

## 20 YEARS OF SERVICE

DAVID PAINTER | French Gulch  
★ JOHN CLADOPOLUS | Montgomery Creek ★  
★ JOHN ROBBINS | Soldier Mountain ★  
SY GILES | Big Bend ★  
STEPHEN CURETTON | Hat Creek  
★ JOHN CATRUCCO | Centerville ★  
★ JAMES MIGUEL JR. | Cassel ★  
★ AMANDA PERI | Bella Vista ★  
STEPHEN TROTTER | Montgomery Creek  
★ RICHARD DANIELSON | Montgomery Creek ★  
★ ROBERT MAXEY | Oak Run ★

## 25 YEARS OF SERVICE

★ ★ ★ ★ ★  
★ GREGORY MAYER ★  
Soldier Mountain  
★ THERESA CARROLL ★  
Montgomery Creek  
★ DANIEL HEBERT ★  
Cassel

## 30 YEARS OF SERVICE

★ ★ ★ ★ ★  
★ LINDA BARNEBY | Oak Run ★  
★ LINETE CHAIX | Cassel ★  
★ CHARLES SHATTUCK | French Gulch ★  
★ THOMAS COE | Soldier Mountain ★  
★ DAVID GREEN | Big Bend ★  
★ KENNETH LAUGHLIN | Hat Creek ★  
★ DON FENNELL | Montgomery Creek ★  
★ WILLIAM ELLIS | Whitmore ★  
★ DONALD COOK | Montgomery Creek ★  
★ RICHARD DANIELSON | Montgomery Creek ★  
★ RICHARD HATHAWAY III | Hat Creek ★

## 40 YEARS OF SERVICE

★ ★ ★ ★ ★  
★ DONALD CHAIX ★  
Cassel  
★ RICHARD HATHAWAY JR. ★  
Hat Creek  
★ JOHN PARRISH ★  
Old Station  
★ RUSSELL MILLER ★  
Igo ★



THANK YOU SO MUCH  
Volunteer Fire Service



# SHASTA COUNTY FIRE DEPARTMENT STATISTICS

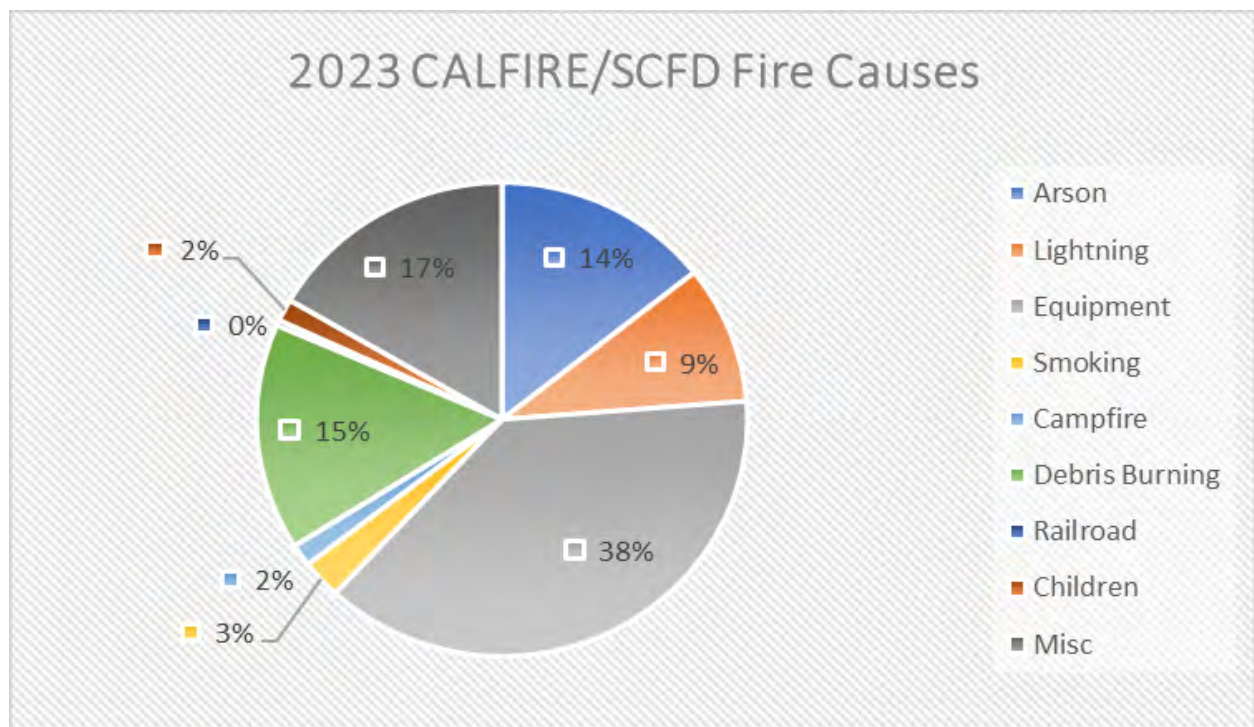
Company No./ Name	Veg Fire	Structure Fire	Other Fires	Med	Hazmat/FMS	Public Assists / Other	Active Vol	Total Dispatches	Total Response	Response %
10 - Cassel	10	10	20	121	3	14	5	183	71	39%
11 - Hat Creek	10	2	19	117	2	13	7	170	84	49%
12 - Old Station	6	9	18	119	2	12	1	167	2	1%
13 - Soldier Mountain	8	4	16	60	1	7	8	104	60	58%
20 - Shingletown	18	4	27	528	10	58	13	658	175	27%
30 - Oak Run	12	6	11	44	2	3	3	81	70	86%
31 - Whitmore	5	0	0	48	5	5	7	70	58	83%
32 - Palo Cedro	25	19	59	401	7	46	13	570	154	27%
33 - Bella Vista	29	12	49	564	7	26	14	701	174	25%
50 - Igo	26	8	27	133	3	8	9	214	103	48%
52 - Centerville	9	7	36	230	8	19	4	313	16	5%
54 - Lakehead	9	0	26	254	7	19	5	320	169	53%
55 - West Valley	20	13	28	144	3	14	10	232	169	73%
59 - French Gulch	6	0	8	63	2	2	6	87	60	69%
70 - Big Bend	5	1	2	24	2	1	6	41	25	61%
71 - Montgomery Creek	17	5	23	210	6	13	10	284	261	92%
72 - Jones Valley	16	5	19	191	4	15	4	254	212	83%
Total	231	105	388	3251	74	275	125	4449	1863	42%

## CAL FIRE STATISTICS

Station No./ Name	Veg. Fires	Structure Fires	Other Fires	Med.	Hazmat / FMS	Law Enforcement	Others	Total
14 Burney	39	16	83	270	9	0	40	457
19 Big Bend	8	0	2	13	1	0	3	27
22 Shingletown	29	7	49	556	13	0	73	727
32 Palo Cedro	40	34	104	524	8	0	65	775
34 Buckhorn	9	1	12	36	2	0	8	68
35 Whitmore	32	4	24	78	6	0	26	170
43 Redding	123	45	177	484	16	0	64	909
47 South County	55	36	198	1128	25	1	133	1576
57 Igo / Ono	23	3	24	81	2	0	12	145
58 Shasta	94	17	131	543	22	0	61	868
73 Shasta College	90	34	194	959	21	1	62	1361
74 Diddy Wells	46	13	33	190	5	0	42	329
75 Hillcrest	17	3	20	98	2	0	8	148
TOTALS	605	213	1051	4960	132	2	597	7560

# PREVENTION CALL STATISTICS

Resource	Veg. Fire	Structure Fires	Other Fires	Med.	Hazmat / FMS	Law Enforcement	Public Assists / Other	Total
B2406	12	3	14	29	1	0	4	63
B2407	8	2	7	10	1	0	3	31
B2408	0	0	2	5	0	0	1	8
B2409	3	4	15	24	0	1	9	56
B2411	19	3	23	48	0	0	6	99
B2412	19	20	27	90	1	1	23	181
B2413	47	15	73	126	2	1	9	273
B2414	25	23	61	91	1	0	3	204
B2415	23	7	38	75	0	0	5	148
B2416	23	11	30	57	2	0	4	127
B2417	42	13	55	113	1	0	2	226
B2418	30	6	19	42	0	0	5	102
B2419 (*B2404)	21	8	21	61	1	0	4	116
B2420	25	9	35	8	2	148	3	230
P2421	85	26	85	30	1	203	6	436
P2423	80	22	76	17	4	149	9	357
TOTALS	462	172	581	826	17	503	96	2657



# FIRE PREVENTION & LAW ENFORCEMENT

Three full-time law enforcement officers assigned to the Prevention Bureau conduct fire investigations and enforce forest practice and fire laws. While these officers have primary duties, each are responsible for responding to incidents requiring a law enforcement officer/investigator response. Officers are involved in many fire investigations throughout the year and will regularly assist other law enforcement agencies. In addition to the three fire investigator peace officers, there are five other reserved peace officers in the Unit that may help on larger investigations or enforcement, when needed.

## **B2420 CAL FIRE- Fire Prevention Bureau Battalion Chief, J.T Zulliger**

The Prevention Bureau Chief is a state-funded position occupied by Battalion Chief J.T Zulliger. Chief Zulliger has served as the Prevention Bureau Chief since July 2016. He is responsible for oversight of Law Enforcement, investigations, and civil cost recovery for CAL FIRE/SCFD.

## **P2421 CAL FIRE - Fire Prevention Specialist/Peace Officer, Kole Oliver**

The Fire Prevention Specialist is a state-funded position occupied by Fire Captain Kole Oliver. This position is responsible for general Law Enforcement duties. They also complete railroad and power-line safety inspections. In addition, he reviews and analyzes fire ignitions to identify potential hazard areas.

## **P2423 SCFD- Fire Prevention Specialist/Peace Officer, Matt Alexander**

This position is funded by Shasta County and is responsible for structure fire investigations, in addition to other fire investigations and Law Enforcement duties. The Shasta County Fire Prevention Specialist also functions as a lead for tactics and firearms training for SHU's Peace Officers.

## **P2426 CAL FIRE - Fire Prevention Specialist II/PIO, Jas Shaw**

This state-funded position is dedicated to engaging with our community, particularly youth and families through educational programs at public events and local schools. Additionally, the FPSII/PIO also responds to local incidents to ensure timely and accurate dissemination of emergent incident information to the media and the public through various platforms. One of the key responsibilities of this role is the creation of documents, press releases, and social media posts to keep the public informed about important topics. The FPSII/PIO also oversees the Shasta Youth Fire Prevention & Intervention Program.

## **Prevention Office Technician CAL FIRE, Grace Quigley**

This state-funded position provides clerical support for the CAL FIRE/SCFD Law Enforcement office and the County Fire Marshal's Office. Duties include documentation, records retention, database management, correspondence, public record requests and other special fire prevention projects.



# EMERGENCY COMMAND CENTER HIGHLIGHTS

The Redding Emergency Command Center (ECC) is a secondary Public Safety Answering Point (PSAP). It is staffed 24/7 with a minimum of two personnel during the winter and three personnel during the summer months to facilitate dispatching appropriate resources to emergencies county-wide. The ECC is staffed with 13 permanent employees. The ECC Battalion Chief oversees one Communications Supervisor, six Fire Captains, and five Communications Operators working alternating shifts. Collectively, these employees have the field experience, local historical knowledge, and technical expertise to take full advantage of the state-of-the-art Computer Aided Dispatch (CAD) System. These dedicated employees dispatch for 14 state fire stations, 18 SCFD Volunteer Companies, and 10 fire protection districts throughout Shasta and Trinity Counties.

Dispatch plans are tailored to the type of incident being dispatched in each area. However, information gathered from 911 callers, weather monitoring, and fire history for a given area are also used to determine the appropriate number of resources being dispatched to an incident. The ECC Captain provides input and oversight while functioning as a 24-hour Duty Officer. The Captain uses their field experience to initially command the incident prior to the first arriving field unit and is given full authority to modify a response based on the information received. The ECC is co-located with the U.S. Forest Service dispatch center for the Shasta Trinity National Forest.

In 2023, the Emergency Communications Center (ECC) managed a total of 55,274 telephone calls, with 19,031 classified as emergencies, leading to 14,546 incidents addressed within our unit. Additionally, the ECC handled 1,139 out-of-unit requests for resources, aiding in over 204 non-local emergency incidents statewide. On the local front, the ECC played a crucial role in resource management during the Wonder Incident, processing over 474 requests within our resource ordering system within a 72-hour timeframe.

Our ECC Staff communicates daily with the Northern Region Geographic Area Coordination Center to provide staffing information, personnel availability, ground/air resources availability, and local incident resource needs. We look forward to the challenges and successes 2024 may bring and stand ready to provide the citizens of Shasta County with the most professional services that fire service can provide.



# TRAINING HIGHLIGHTS

Our mission is to provide quality service to the public by developing the skills and abilities of all Shasta County Fire Department (SCFD) and CAL FIRE Shasta-Trinity Unit's (SHU) personnel through training. We ensure that all federal, state, local and departmental training mandates, laws and regulations are followed as they pertain to training. The SCFD/SHU Training Bureau coordinates the initial and ongoing training requirements of 500+ personnel consisting of SCFD volunteers, career staff, CAL FIRE uniformed operational staff, non-uniformed support staff, California Conservation Corps members, and National Guard Soldiers. This is accomplished through training that is efficient, economical, and consistent with the needs of the public, the County of Shasta, the Fire Department, and its members. On average, the Training Bureau supplies over 4,000 instructor hours and the aforementioned personnel participate in over 22,000 hours of training each year.

The Training Bureau is staffed with one Battalion Chief who oversees all aspects of the Training Bureau, one Fire Captain who's primary mission is the coordination and delivery of training requirements for CAL FIRE Unit personnel, one Fire Captain who serves as the Shasta County Fire Department Training Officer, one Fire Captain who functions as the SCFD/SHU EMS Coordinator, and one Office Technician to support all the programs. In the winter months, by agreement with SCFD, our staff is augmented with 4 additional field personnel as training officers who are outfitted with vehicles and specialized equipment. Training Officer's primary mission is to deliver quality training courses and topics to the 18 Volunteer Fire Companies that make up SCFD. These trainings are predominantly delivered on weekends or in the evenings to accommodate the needs of SCFD volunteers. Career personnel trainings are coordinated at various times throughout the year. In addition to training coordination and delivery, the Training Bureau augments the response capabilities of Shasta County. In 2023 the Training Bureau staff responded to over 150+ emergency calls for service.

The Training Bureau continues to evaluate our processes and improve the training program for both SCFD and the local Unit. The Training Bureau continues its successful relationship with Shasta College, the Shasta Tehama Trinity Public Safety Training Consortium (SHIELD), and the Fire Service Training Officers of Shasta County. Through these relationships, we deliver and participate in regional training courses throughout Shasta, Tehama, and Trinity Counties. The Training Bureau continues to be a lead agency in the development of SHIELD's facility and programs. We look forward to the upcoming year and continued improvement in all our programs.



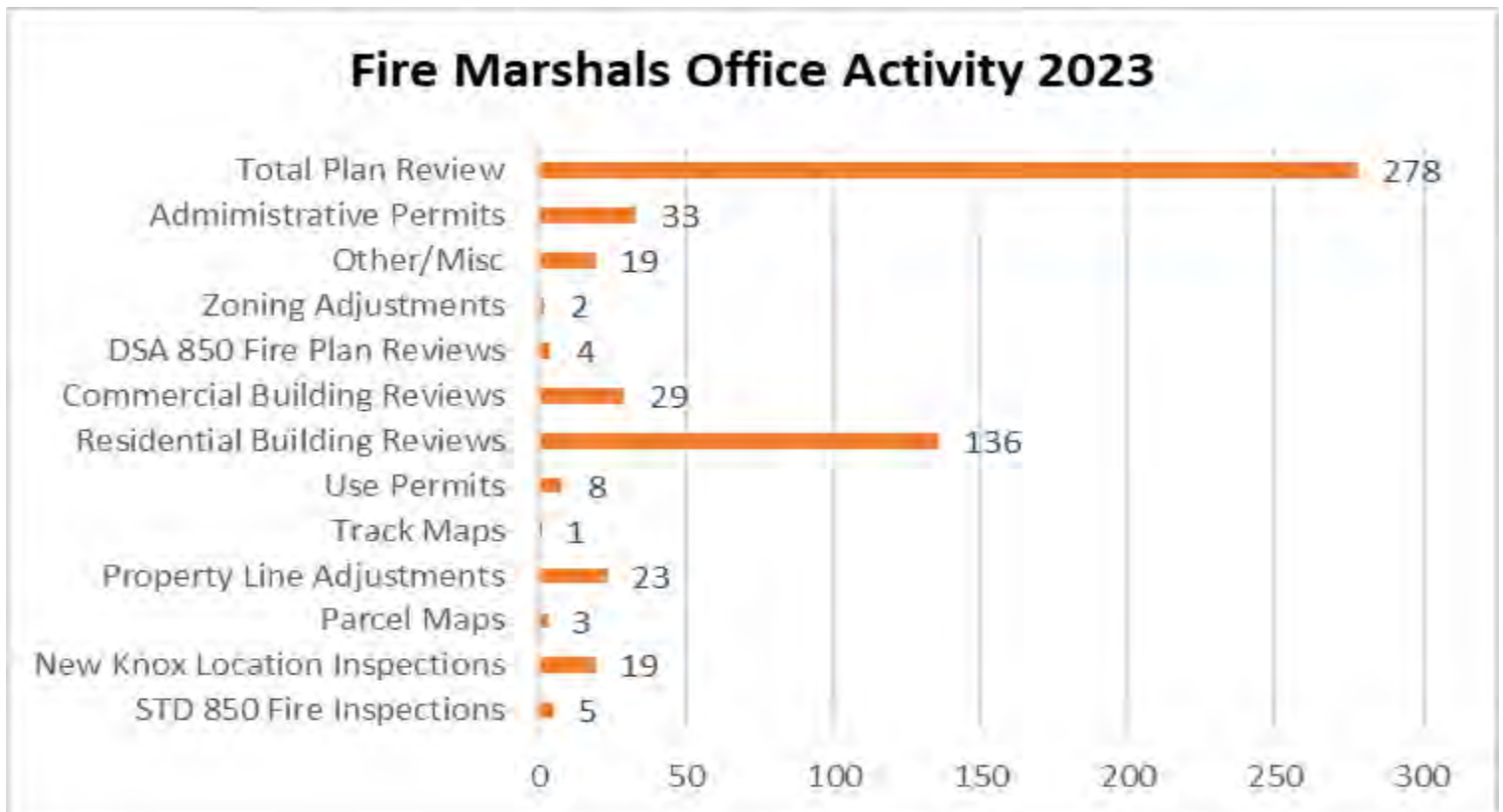
# FIRE MARSHAL & PROTECTION PLAN

## County Fire Marshal SCFD- P2425, Jeff Powell

Jeff Powell has served as the Shasta County Fire Marshal since 2022 and has served in the fire service for nineteen years. Fire Marshal Powell enforces the County's Fire Safety Standards and California Fire Code under the oversight of the County Fire Warden/CAL FIRE Unit Chief. The Fire Marshal's Office works in cooperation with the Shasta County Planning and Building Divisions by ensuring fire code compliant commercial and residential developments. Fire Marshal Powell represents the fire department at Planning Commission and Resource Agency meetings as well as, reviews and inspects large construction developments throughout the County to ensure compliance with fire code standards.

## County Fire Safety Inspector SCFD- P2426, Scott Ross

Scott Ross has served as the Shasta County Fire Safety Inspector since September 2016. The County Fire Inspector is responsible for residential plan review, on-site inspections for driveway standards, set-back exception requests, commercial and residential fire sprinklers, defensible space inspections during construction, and annual life safety fire inspections of businesses in Shasta County. Fire Inspector Ross performs fire alarm and hydrant test inspections. Fire Inspector Ross also performs public information officer field work during extended attack fires.





In September of 2018, State Senate Bill 1205 was passed requiring all State mandated inspections be completed annually and reported to the Board of Supervisors. These inspections include schools, hotels, motels, lodging houses, and apartment houses. Shasta County Fire Department complied with Senate Bill 1205 completing all State-Mandated inspections. In addition to state mandated inspections, the Shasta County Fire Marshal office completed in upwards of 480 jobsite fire inspections of new and existing commercial, residential, industrial developments, and infrastructure improvements in 2023.

Through pre-development plan review, field inspections, and code enforcement action the Shasta County Fire Marshal's Office is also tasked with ensuring the following:

- Ensuring safe and effective Emergency Vehicle Access Roads in compliance with County Fire Safe Standards to ensure safe access for emergency fire equipment as well as civilian evacuation and unobstructed traffic circulation.
- Ensuring that new and existing fire mains and hydrant systems throughout the county remain reliably operational and continue to deliver the required volume and pressure of water for firefighting operations.
- Ensuring that all new and existing fire sprinkler systems and other fire protection systems are installed and perform to minimum standards. Perform annual inspections of all existing fire protection systems to ensure such systems are always maintained and remain in service throughout the life of the systems. Ensuring fuel loading reductions, vegetation removal, and defensible space including building setbacks and strategic locations of green belts in compliance with Shasta County Fire Safe Standards.



# FLEET SERVICES

Darren Oylear is the Forestry Equipment Manager (FEM) of both the CAL FIRE and Shasta County Fleets. The county fleet is comprised of 106 vehicles including fire engines, water tenders, rescues, and boats. FEM Oylear also manages the CAL FIRE fleet that includes 168 pieces of fire equipment. The SCFD fleet is maintained by two full time heavy equipment mechanics (HEMs), Ben Onopa and Tyler Peck. These mechanics service, repair, and maintain the SCFD equipment either in the field, at the volunteer fire stations, or their shop located at the Shasta-Trinity Headquarters in Redding.

The fleet maintenance budget is \$165,000 with an additional \$20,000 in measure "B" funds. It is the fleet departments goal to provide a reliable and well maintained fleet for our volunteers to respond to the needs of Shasta County. We also strive to implement a 20 year replacement schedule based on age and mileage. To maintain that schedule on fire apparatus, the department would be required to purchase a new fire engine each year. The Measure "B" funding is not sufficient to fulfill this endeavor. The department has the ability to augment the revenues to this fund in the form of renting out Shasta County apparatus to CAL FIRE during wildland fire emergencies, and does so when possible.

In 2023 the department purchased an SUV and a 3/4 ton Silverado. In addition to, we are expecting to take delivery of a Type 1 and Type 3 Engine in 2024 that were ordered back in 2022. Shasta County Fire Department was awarded proceeds from the Zogg Fire Settlement levied against PG&E in 2023 which we hope to utilize toward the purchase of 2 Type 1 Engines, 4 Type 6 Engines and a mobile breathing support.



# SERVICE CENTER

**Forestry Logistics Officer, CAL FIRE, April Howell**

**Forestry Logistics Officer, CAL FIRE, Jaime Crane**

Both April and Jaime perform in one of the Unit's key supporting functions as Forestry Logistics Officers, they help with many operational needs in the Shasta-Trinity Unit and SCFD. They both are responsible for understanding many policies, procedures, and regulations as they relate to purchasing through various contracts and vendors. They serve as the property manager for all excess state and federal equipment and are responsible for its tracking. April and Jaime are the keepers of all personal protective equipment (PPE) for CAL FIRE, which includes purchase, distribution, and tracking for approximately 360 Shasta-Trinity Unit employees.

Along with purchasing and distributing CAL FIRE PPE, they make many of the purchases to support fire emergencies within the county. In addition to local firefighting support, they are also responsible for supporting resources that are surged into the area during extended incidents often quadrupling their workload. They work with the SCFD parts storekeeper to ensure all volunteer firefighters and CAL FIRE employees have the required equipment and supplies.

**Parts Storekeeper, SCFD**

The Parts Storekeeper has the daunting task of ensuring that all 108-plus SCFD volunteer firefighters are properly outfitted with personal protective equipment (PPE).

These articles include structural turnouts, wildland Nomex, hydration packs, and other miscellaneous gear needed by volunteer firefighters. This position is responsible for purchasing all SCFD PPE, supplies, tracking, and inventory of all items issued to the volunteer firefighters. It also delivers necessary supplies to volunteer stations and plays a key role in supporting fires within the SCFD response area.



Finally, the position supports all functions of the CAL FIRE side of the Service Center in collaboration with the state Forestry Logistics Officer.



# MANAGEMENT SERVICES SUPPORT STAFFING

Shasta County Fire Department and CAL FIRE Management Services staff members provide a wide variety of services to Shasta County volunteer and CAL FIRE firefighters. Management Services staff is committed to providing outstanding customer service and positive experiences to all SCFD volunteers, CAL FIRE firefighters staff, the public, and cooperating agencies.

Staff in these sections are managed by Sean Johnson, Assistant Chief of Administration and Lorie Tarvin, Staff Service Manager I (SSM I). Staff positions in Management Services include Associate Governmental Program Analysts (AGPA), Staff Services Analysts (SSA), Personnel Specialists (PS), and Office Technicians (OTs).

**AGPA, SCFD Finance, Julia Hayen**

**AGPA, CAL FIRE Finance, Sierra Falkenstein,**

Julia's responsibilities include development and management of the SCFD budget as well as grant funded expenditures and reimbursements. These activities often require written reports to the Board of Supervisors. Julia also creates and processes all payments to volunteer firefighters, including training, call stipends, reimbursement of fire pay, annual reviews for their attendance, and calculates service credits. Julia is also responsible for the creation of vendor contracts for services to the SCFD facilities.

Sierra's responsibilities include managing the Shasta-Trinity Unit's budget and various allocations, reconciliations of expenditures, and audits financial documents that are processed using state funding. Sierra also acts as the Unit's CalCard coordinator, handles the banking, and is the Fi\$CAL lead, oversees CAL FIRE contracts for Shasta-Trinity Unit.

**Executive Office Technician and Trinity River Camp, CAL FIRE, Leah Schaefer**

**SCFD Office Technician, Rebecca Thompson**

**Office Technician, Front Desk, SCFD**

Leah is the Executive Team's Office Technician managing schedules, arranging meetings, and ensuring the subject matter is properly documented with agendas and meeting minutes. She performs a large volume of data entry and special projects. Leah works part-time to assist the Trinity River Conservation Camp with administrative duties such as purchasing and FC-77 packages. Rebecca Thompson processes all new volunteer firefighters for SCFD. This process includes scheduling pre-employment physicals, completion of DOJ/FBI background checks, and testing for the use of self-contained breathing apparatus. They work cooperatively with Shasta County Risk Management on injury reporting and the addition of new volunteer firefighters. They process all accounts payable for the SCFD volunteer stations. They work with CAL FIRE and SCFD staff to coordinate the annual SCFD Volunteer Appreciation Dinner.

The Front Desk Office Technician is the first contact when members of the public enter the doors at SCFD and CALFIRE. This position is responsible for assisting the public with questions, fielding all incoming calls to the Unit, properly assessing the caller's request, and issuing burn permits. This position also processes the monthly SCFD County Activity Reports.

#### **AGPA - Hiring, CAL FIRE, Austin Nobles**

The AGPA - Hiring position is responsible for managing the hiring program in the Unit. This position manages the Unit's position control, facilitates the hiring of Unit positions and ensures proper hiring practices are implemented throughout the program. Additionally, this position is responsible for ensuring proper staffing levels are met at all SCFD Schedule A facilities year-round and CALFIRE stations, camps, and bases.

#### **SSA, CAL FIRE Finance, Dusty Steele, SSA, CAL FIRE Finance, Michelle Patton**

Michelle and Dusty process the documents generated by field staff for purchases within the Unit. Analysts work extensively in the State's financial system, Fi\$CAL, ensure their assigned stations are working within their budgetary guidelines, and reconcile their station's monthly CalCard statements.

#### **Personnel Specialist, CAL FIRE, Tabitha Mallery Personnel Specialist, CAL FIRE, Amanda Bline**

Tabitha and Amanda are responsible for processing personnel documents related to pay, hiring, benefits, and other personnel transactions. Each Personnel Specialist is assigned a portion of the alphabet and is responsible for full-service personnel transactions. They also serve as the assigned Return to Work Coordinator and work with Region staff for employees injured while on duty. Personnel Specialists also facilitate seasonal hiring and layoffs in coordination with the Hiring AGPA.



# BATTALION 1

is under the direct supervision for Battalion Chief Steve Chapman. Battalion 1 is comprised of five Shasta County Volunteer Fire Companies and two CAL FIRE stations.

- Volunteer Company 10 - Cassel
- Volunteer Company 11 - Hat Creek
- Volunteer Company 12 - Old Station
- Volunteer Company 13 - Soldier Mountain
- Volunteer Company 70 - Big Bend
- CAL FIRE Burney Station 14
- CAL FIRE Big Bend Station 19

The battalion serves a population of approximately 4,800 residents and covers an area of 336,412 acres. Each of the SCFD Battalion I Volunteer Fire Companies have Type II Engines, Type III Engines, water tenders, and rescues. The SCFD has the jurisdictional responsibility for fire protection in the communities of Big Bend, Cassel, Hat Creek, Old Station, Pondosa, Dana, Soldier Mountain, Lake Britton, and Burney Falls State Park. Volunteer Firefighters from Company 10, 11, and 12 continue to join forces in an effort to increase the level of service to their communities. Each company has committed to being dispatched to all calls in the neighboring response areas. All of the companies have either an auxiliary or Inc. Board to support the companies financially and within the community. Recruitment and retention of volunteers remains difficult in Battalion I and the number of volunteers at each of the companies continues to decline.

## **CAL FIRE Station 14 (Burney)**

This station has remained fully staffed throughout the entire 2023 year due to additional State funding. This has provided additional service to the citizens of Shasta County in the Burney, Big Bend, Cassel, Hat Creek, Montgomery Creek, Old Station, and Soldier Mountain areas. Station 14 staff worked on the Burney Community Fuel Break- Phase II & III, the Johnson Park Community Fuel Break, and assisting with vegetation management within Burney Falls State Park. The CAL FIRE engine is staffed for 24 hours a day with a minimum of three personnel (one company officer and two firefighters).

## **SCFD Company 10 - Cassel**

Company 10 is served by six volunteer firefighters, led by Volunteer Chief Don Chaix. It serves as the primary fire company for Cassel, Lake Britton, and Burney Falls State Park. The Company has a population of 207 permanent and seasonal residents. The area is a popular outdoor recreation area for hunting, fishing, camping, and boating. The Company's primary response area includes three Pacific Gas & Electric (PG&E) powerhouses along Hat Creek, the Pit River and the Lake Britton (Pit 3) Dam. There are two state highways, Highway 299E, and Highway 89. Furthermore, there is also the Pacific Crest Trail, Burney Falls State Park, several public and private campgrounds, two large construction companies, two large PG&E natural gas transmission lines, and multiple main electrical transmission lines. The communities served by Company 10 have two fire safe councils: Burney Fire Safe Council (Lake Britton) and the Hat Creek Valley Fire Safe Council (Cassel proper).



The fire safe councils have identified four separate evacuation collection points that lie within Company 10's primary response area. The pre-identified collection points are the Cassel Volunteer Fire Station, Mountain Christian Academy, Hat Creek Construction, and Burney Falls State Park. In 2023, Company 10 responded to 71 calls for service.

### **SCFD Company 11 - Hat Creek**

Company 11 is served by seven volunteer firefighters led by Volunteer Chief Richard Hathaway III. Company 11 serves a community of 500 permanent and seasonal residents. The area is a popular outdoor recreation area for hunting, fishing, camping, and hang gliding. State Highway 89 and Hat Creek run north and south through its entire response area. Company 11 also responds to the communities of Cassel, to the north, and Old Station to the south. The Company's jurisdiction falls entirely within the Hat Creek District of the Lassen National Forest. Within Company 11's response area is a popular north state hang gliding launch area on the Hat Creek Rim, several public and private campgrounds, and the Hat Creek Radio Observatory; a space research facility operated as a partnership between the University of California, Berkeley, and the Search for Extraterrestrial Intelligence Institute (SETI). The Hat Creek Valley Fire Safe Council serves the entire populated area within Company 11's response area and has identified Company 11 as one of its evacuation collection points. Company 11 volunteers continue their local firefighter training program for area teens. The program provides teens with future job training and promotes interest in becoming a volunteer firefighter. In 2023, Company 11 responded to 84 calls for service.

### **SCFD Company 12 - Old Station**

Old Station Company 12 is served by one volunteer firefighter, Volunteer Chief John Parrish. John Parrish has been with the Old Station Volunteer Company for over 40 years. The Company serves a community of 51 full-time residents, with another approximately 2,000 summer residents. The area is a popular outdoor recreation area for hunting, fishing, camping, and sledding. State Highways 89 and 44 run through the response area. Company 12's response area falls entirely within the Hat Creek District of the Lassen National Forest and borders the Lassen Volcanic National Park. Within the Company's response area are two fishing resorts, three public campgrounds, a gas station/market, and a restaurant. The Hat Creek Valley Fire Safe Council serves the entire populated area within the response area and identified Company 12 as one of its evacuation collection points. Every Spring, they host the annual Fisherman's Breakfast on the opening Saturday of the California Trout Season Opener. This event draws large amounts of people from all over Northern California. In 2023, Company 12 responded to 2 calls for service.

### **SCFD Company 13 - Soldier Mountain**

Soldier Mountain Company 13 has eight volunteer firefighters led by Volunteer Chief, Greg Mayer. Company 13 serves the communities of Pondosa, Dana, and Soldier Mountain with a seasonal and permanent resident population of approximately 120 people. The Company's primary response area is a combination of remote timberland, wetlands, ranch, and agricultural land. State highway 89 runs through the west portion of the response area. There is a large wild rice processing facility, two large PG&E natural gas pipelines, several large power transmission lines, and fishing resorts in the response area. In 2022, Company 13 responded to 60 calls for service.

# BATTALION 2

is under the direct supervision of Battalion Chief Jake Keown. Battalion 2 includes two Shasta County Fire Department Volunteer Fire companies and 2 CAL FIRE stations.

- Volunteer Company 30 – Oak Run
- Volunteer Company 71 – Montgomery Creek
- CAL FIRE Diddy Wells Station 74
- CAL FIRE Hillcrest Station 75

During CAL FIRE's peak staffing period, Hillcrest and Buckhorn stations are staffed with one type three fire engine each. Diddy Wells is staffed with two type three fire engines during peak fire season, and one during non-peak fire season with 3 personnel state funded for fuels reduction during non-peak fire season months.

Each volunteer fire company in Battalion 2 houses a Type II structure fire engine, a Type III wildland fire engine, rescue unit, and water tender. These companies are actively involved in recruitment, training, emergency response, facility and equipment maintenance, and various fundraising activities. The communities located within the Battalion pose a variety of emergency response challenges to fire personnel including industrial and commercial structures, large power distribution facilities, and a variety of dynamic fuel and topography types.

In 2023, Battalion 2 continued to work on Vegetation Management projects to increase the safety of Shasta County residents. Fuels reduction work along Buzzard Roost Road has begun and will continue into 2024. Fuels reduction along Backbone Road has been approved and work began in 2022 and will continue into 2024. Battalion 2 continues to work with local landowners to treat suitable areas with prescribed fire for large scale treatments; 2023 we treated approximately 237 acres. The reduction of vegetation allows for safer ingress of emergency resources evacuation of residents during a wildfire incident, and provides for additional grazing land for wild and domestic animals. A wildfire burns less intense in areas that have had fuels treatments, allowing for greater probability of success during suppression efforts.

## **SCFD Company 30 – Oak Run**

SCFD Company 30 is led by Volunteer Chief Linda Barneby. Company 30 protects the communities of Oak Run and Mill Creek Estates. Area population is approximately 800 persons within 100 square miles. Oak Run Volunteer Fire Company has 4 active members. Company 30 continues improving the facility, to increase function and fund-raising abilities for the future. Company 30 responded to 78 calls for service in 2023.

## **SCFD Company 71 – Montgomery Creek**

SCFD Company 71 has two stations; Sta71 on Hwy 299 in Round Mountain, houses the rescue and structure engine. Station 271 on Hillcrest Drive in Montgomery Creek, houses the wildland engine and water tender. At times, they may respond with SCFD Big Bend VFC 70, SCFD Oak Run VFC

30, SCFD Bella Vista VFC 33, CAL FIRE Hillcrest Sta 75, CAL FIRE Diddy Wells Sta 74, CAL FIRE Big Bend Sta 19, CAL FIRE Shasta College Sta 73, CAL FIRE Burney Sta 14, and Burney Fire District. Company 71 is led by Chief Theresa Carroll, Assistant Chief Rick Danielson, Captain Don Fennell, Engineer Chris Minard, and has 10 active volunteer firefighters. Company 71 responded to 261 incidents in 2023 along with 2,657.50 total hours for responses, trainings, station/vehicle maintenance, administration, and fundraising.



# BATTALION 3

is under the direct supervision of Battalion Chief Brian Noel. Battalion 3 consists of two volunteer fire companies, one CAL FIRE station and one CAL FIRE/SCFD station:

- Shasta County Volunteer Fire Company 20 - Shingletown
- Shasta County Volunteer Fire Company 31 - Whitmore
- CAL FIRE Shingletown Station 22/ SCFD Engine 22
- CAL FIRE Whitmore Station 35

Located in southeastern Shasta County, Battalion 3 encompasses the communities and surrounding areas of Millville, Shingletown, Whitmore, Viola, and Manton. Millville Fire Protection District (MFPD) also provides protection in and around the community of Millville. Shasta County Fire Department is a cooperator with other area fire agencies, having automatic aid fire protection agreements with both Millville FPD and Tehama County Fire (Manton Volunteer Fire Company) to provide protection to the citizens of Shasta County based on the closest resource concept.

## **SCFD Company 20–Shingletown**

The Volunteer Company is led by Interim Volunteer Chief Michael Bowling and utilizes three stations. The locations of these stations are Shasta Forest Village, the Starlite Pines Subdivision, and the intersection of Alward Way and Highway 44. There are eight volunteer firefighters who are fully trained responders, 3 observers, and two new recruits that are currently with the Company. Resources utilized to respond to these incidents include two structure fire engines, one wildland fire engine, one 3,000 gallon water tender, and three rescues. One of the rescues is fully equipped with extrication rescue tools.

Critical infrastructure within and around the community includes PG&E natural gas lines, PG&E and WAPA high-voltage transmission lines, Volta Powerhouse, a medical clinic, Black Butte Elementary and Middle School, church and private camp/ recreational facilities, public camping and recreational sites, and commercial timberland. Commercial businesses located in Shingletown include: grocery stores, Dollar General, restaurants, a small business park, and several other small businesses, totaling approximately 145,000 sq. ft. Roughly 1900 residential structures are in and around Shingletown, including approximately 250 summer homes/cabins. The resident population is nearly 5000. Company 20 responded to a total of 175 incidents in 2023.

## **SCFD Company 31–Whitmore**

Company 31 utilizes one station in Whitmore and is led by Volunteer Chief Bill Ellis. The Volunteer Company was dispatched to a total of 58 incidents in 2023. There are seven volunteer firefighters that are fully trained responders with the Company. Resources utilized to respond to these incidents include one structure fire engine, one wildland fire engine, two 2,000-gallon water tenders, and one rescue.



Critical Infrastructure within and around the community includes PG&E natural gas lines, PG&E and WAPA high-voltage transmission lines, Kilarc Powerhouse, Whitmore Elementary School, Whitmore Community Center, a private church camp/school, public recreational sites, and commercial timberland. Additional commercial businesses located in Whitmore include a general store, post office, and a private winery and antique store, totaling approximately 20,000 sq. ft. Almost 350 residential structures are in Whitmore including 20 summer homes/cabins. The resident population is approximately 700.

### **CAL FIRE/SCFD Station 22 - Shingletown**

CAL FIRE/SCFD Shingletown Station 22 is located on Highway 44 just East of the town of Shingletown and effective July 1st 2022 was staffed with one SCFD Type II structure fire engine under contract with CAL FIRE staff and a minimum of 3 personnel daily. One type III CAL FIRE wildland fire engine is staffed with a minimum of 3 personnel during fire season. While the primary mission emphasizes the management and protection of California's natural resources from wildland fires, the CAL FIRE engine can be dispatched to the scene of auto accidents, structure fires, or any other emergency within SCFD's jurisdiction. During non wildfire season the Station is reduced to one SCFD Type II structure fire engine. In 2023, Station 22 responded to a total of 727 Incidents.

### **CAL FIRE Station 35 - Whitmore**

This is the fourth year that CAL FIRE Station 35 has been open year around, providing additional services to the citizens of Shasta County in the Whitmore, Oak Run, and Shingletown communities. The CAL FIRE engine is staffed for 24 hours a day with a minimum of three personnel (one company officer and two firefighter II's). Station 35 staff worked on the newly created Miller Demonstration State Forest, LaTour Demonstration State Forest, Aldridge VTP as well as other Vegetation Management Burns throughout the Shasta-Trinity Unit. In 2023, Station 35 responded to a total of 170 Incidents.

# BATTALION 4

is under the direct supervision of Battalion Chief Merrick Fields. Battalion 4 consists of two volunteer Fire Companies, two Shasta County Fire Department (SCFD) stations, and one CAL FIRE station.

- Shasta County Volunteer/Career Fire Company 32 – Palo Cedro
- Shasta County Volunteer Fire Company 55 – West Valley
- CAL FIRE Station 43
- SCFD Station 47 – South County

Battalion 4 is located on the valley floor along Interstate 5 and the Sacramento River corridor running North and South between the borders of Tehama County and the northern Redding City limits. Battalion 4 has two incorporated cities which include the City of Anderson and the City of Redding. There are also two unincorporated communities within the Battalion which are served by independent Fire Districts that include Happy Valley and Cottonwood, who have agreements with Shasta County for response.

Redding Battalion 4 is comprised of an integrated, multi-agency workforce of state and local fire-fighting resources that provide fire protection through various types of Automatic Aid, Mutual Aid, and other cooperative fire agreements. Through these various types of agreements, the SCFD is committed to meeting its objective of fostering relationships with its local and federal agency cooperators and stakeholders to share resources as a cost-effective approach to providing services as outlined in the SCFD's 2020 Master Plan.

Battalion 4 is largely comprised of commercial, industrial, residential, agricultural, railroad, and highway uses, including Interstate 5 and State Highways 44 and 273. Located in the center of the Battalion running north and south is the Union Pacific Railroad (UPRR), hauling a diversified business mix of agricultural products, automobiles, chemicals, coal, industrial products, and inter-modal freight moving among the 23 western states. Industrial properties within SCFD's south county protection area include two active lumber mills, Sierra Pacific Industries and Siskiyou Forest Products, and three large bulk propane facilities that include AmeriGas, Campora, and Blue Star Gas. The west side of the Battalion includes Pacific Gas and Electric Company's gas pipeline which delivers natural gas to the City of Redding's Electric Utility Cogeneration Plant through large underground pipes located underneath the UPRR tracks and along Hwy 273 and Clear Creek Road. There are many mixed commercial developments along Hwy 273 and Latona Road to the south including United Parcel Service, Meeks Hardware and building supplies, Win River Casino with its 80,000-square foot gaming center, 40,000+ square foot two story administrative and tribal center, and a three story, 84 room hotel and spa. Many retail centers are located throughout the Battalion including restaurants, lodging, food supplies, recreation activities, equipment/traveler services (including gasoline fueling facilities), and entertainment related facilities.

A complex network of large high voltage transmission lines traverses the Battalion, delivering the main supply of power to cities such as Eureka and Fortuna. Running throughout the central portion of Battalion 4 is the Sacramento River which brings with it an increased demand for seasonal

activities such as rafters, boating, and fishing enthusiasts. Located throughout the Battalion are numerous primary and secondary public schools including Prairie and Pacheco elementary schools, West Valley and Foothill High Schools to name a few.

SCFD is faced with providing a complex and diverse level of fire and other emergency response to the citizens of Shasta County. The SCFD continues to work towards meeting its Master Plan goal of increasing operational efficiencies by developing procedures that immediately reduce response times and increase response safety. The most sizeable portion of Battalion 4 is located along the Hwy 273 corridor and the south county area. 2023 was South County Fire Station 47's first full calendar year open, decreasing response times to the county's highest dollar value assets. Fire Protection within the Battalion is largely made up of career paid staffing within the incorporated cities and Fire Protection Districts, while CAL FIRE/SCFD career and volunteer firefighters make up the fire-fighting work force in the unincorporated areas of the Battalion. The make-up of career and volunteer staffing within Battalion 4 include two career staffed SCFD Type II fire engines, two SCFD volunteer fire companies, two CAL FIRE Type III fire engines, and one CAL FIRE bulldozer.

#### **SCFD Station 32 – Palo Cedro (career and volunteer staffed)**

Schedule A, Engine 32 is staffed with a minimum of 2 career personnel and is co-located with Volunteer Fire Company 32. The career staff operates and maintains the County's Self-Contained Breathing Apparatus (SCBA) Program. The personnel are trained in every aspect of repair, service, maintenance, and Cal-OSHA requirements under Title 8 and the Nation Fire Protection Association (NFPA). The SCBA program is highly involved and is the primary function of the paid staff at Station 32. The community of Palo Cedro has a population of approximately 1,151 people based on the 2020 census. Palo Cedro is primarily comprised of residential, agricultural, commercial, and highway uses. Within the core of the community located near Deschutes Road and State HWY 44 is a mix of commercial properties including a supermarket, strip mall retail centers, and educational institutions including Foothill High School, Chrysalis Charter School, Redding Christian School, North Cow Creek School, and Junction Elementary School. The community has seen additional growth in 2023 of both residential and large commercial buildings. The Company operates one wildland fire engine, fire rescue, a water tender, and a breathing support unit. In 2023, E-32 responded to 775 incidents and Company 32 responded to 154 incidents.

#### **CAL FIRE Redding Station 43**

CAL FIRE Redding Fire Station 43 is located on Airport Road in Redding and is served by two Type III CAL FIRE wildland fire engines staffed with a minimum of 3 personnel during the peak fire season months of June 1st through October 31st. While CAL FIRE's primary mission emphasizes the management and protection of California's natural resources from wildland fires, these two engines can be dispatched to the scene of auto accidents, structure fires, or any emergency within SCFD's jurisdiction. During the non-wildfire season period of November 1st through May 31st, staffing at Station 43 is reduced to one Type III wildland fire engine staffed with a minimum of 2 personnel under contract with the SCFD. CAL FIRE/SCFD has a year around Mutual Threat Zone Agreement (MTZ) with the City of Redding Fire Department for structure fires, wildland fire, and traffic accidents. This Agreement provides decreased response times for both departments for incidents in the area covered by the MTZ. In 2023, Station 43 responded to 904 Incidents.

### SCFD Station 55 – West Valley

The West Valley Volunteer Fire Company is led by Volunteer Fire Chief Shawn Plummer. While West Valley is considered a part of the Cottonwood community for census purposes, it is estimated that approximately 750 residents are served by the West Valley Volunteer Fire Company. The area boasts a mix of mainly residential and agricultural uses with small commercial facilities and the West Valley High School. The Company operates 1 structure fire engine, 1 wildland fire engine, 1 fire rescue, and a water tender. In 2023, West Valley Volunteer Fire Company responded to 169 incidents.

### SCFD Station 47 – South County Station

Schedule A South County Station 47 located on Riverside Drive in Anderson and is served by a SCFD Type II structure fire engine, E-47, under contract with CAL FIRE, and staffed with a minimum of 2 personnel. The station also houses a wildland engine and a water tender that the personnel can cross staff or upstaff depending on the need. Station 47's Response Area consists of the unincorporated area between Redding and Anderson along Interstate 5 and State Highway 273. Additionally, it extends South of the City of Anderson to the County line, excluding Cottonwood Fire Protection District. 2023 was Station 47's first full calendar year open and they responded to 1576 incidents.





# BATTALION 5

is under the direct supervision of Battalion Chief Dusty Gyves. Battalion 5 consists of three volunteer fire companies and two CAL FIRE stations (one Amador):

- Shasta County Volunteer Fire Company 50 - Igo/Ono
- Shasta County Volunteer Fire Company 52 - Centerville
- Shasta County Volunteer Fire Company 59 - French Gulch
- CAL FIRE Ono Station 57
- CAL FIRE Shasta Station 58

Battalion 5 is comprised of the communities of Centerville, Igo/Ono, Keswick, French Gulch, and Platina. The Battalion lies at the foot of the California Coast Range with elevations ranging from 500 to 6919 feet. The Whiskeytown National Recreation Area and the Shasta Fire Protection District are within the Battalion. The Battalion is comprised of oak woodland, chaparral, and timberland with residential subdivisions located within the wildland. All the communities within Battalion 5 have the potential for a catastrophic Wildland Urban Interface (WUI) fire due to population density and fuel loading. These communities are served by three volunteer fire companies and two CAL FIRE stations.

Critical infrastructure within the Battalion includes Shasta Dam and Powerhouse, Keswick Dam and Powerhouse, Carr Creek Powerhouse, Spring Creek Powerhouse, and the associated power lines that carry the electricity from these facilities to the rest of the state. State Highways 299 and 36 traverse the Battalion carrying thousands of travelers and hazardous materials to and from the north coast of California each year.

The numerous hiking and biking trails in Centerville, Keswick, and Whiskeytown have increased over the years and the number of remote area rescues on these trails has increased as well. This presents a unique rescue task that frequently involves the Shasta County Fire Department, the Shasta County Sheriff's Department, the California Highway Patrol helicopter, and the National Park Service personnel at Whiskeytown. Summertime recreation at the Sacramento River and Clear Creek present water rescue hazards within the Battalion.

Public school campuses located in Platina, Igo, Centerville and French Gulch, as well as the Keller Lumber Company in Keswick are examples of the significant fire and rescue risk located within the Battalion.

## **SCFD Company 50 - Igo/Ono**

The Igo/Ono Volunteer Fire Company currently has a roster of 8 volunteer firefighters and is led by Volunteer Chief John Allen. The community contains over 600 residents and is comprised of mainly rural residences, ranches, and wildland. The City of Redding and the County of Shasta operate a

landfill east of Igo, and the Northern California Veterans Cemetery is located south of town. The fire company has a fire station in Igo and a satellite station in Ono. The fire company operates two municipal fire engines, one wildland fire engine, one water tender, and one rescue vehicle. In 2023, Company 50 responded to 103 incidents.

### **SCFD Company 52 - Centerville**

The Centerville Volunteer Fire Company currently has a roster of 2 volunteer firefighters and is led by Volunteer Chief John Luntey. The community is comprised of mainly residential subdivisions and rural residences. The community has numerous houses of worship, a feed store, mini-storage, and the Grant elementary/middle school campus that are examples of the target hazards in Station 52's response area. The fire company operates one municipal fire engine, one wildland fire engine, and one rescue vehicle. In 2023, Company 52 responded to 16 incidents.

### **CAL FIRE Ono Station 57**

CAL FIRE Station 57, located in the community of Ono, is a seasonal fire station open only during the summer and fall. One CAL FIRE wildland fire engine operates out of the facility. In 2023, Station 57 responded to 145 incidents.

### **CAL FIRE Shasta Station 58**

CAL FIRE Station 58 provides additional protection to SCFD jurisdiction west of Redding during the winter months. An engine is staffed at Station 58, 24 hours a day, with a minimum of 2 personnel. An SCFD breathing support trailer unit is housed out of the facility and is staffed as incidents dictate. During fire season, CAL FIRE staffs two wildland fire engines and one bulldozer at the station. In 2023, Station 58 responded to 868 incidents.

### **SCFD Company 59 - French Gulch**

The French Gulch Volunteer Fire Company currently has a roster of 6 volunteer firefighters and is led by Volunteer Chief Cliff Shattuck. The community contains over 300 residents, and it is comprised of mainly of rural residences and historical commercial businesses. The French Gulch Hotel, built in 1885, is a historic business built in the gold mining era. The Carr Creek Powerhouse is in Station 59's response area. The fire company operates one municipal fire engine, one wildland fire engine, and one rescue vehicle. In 2023, Company 59 responded to 60 incidents.



# BATTALION 7

is under the direct supervision of Battalion Chief Brian Gibilisco and consists of three SCFD Volunteer Fire Companies and one CAL FIRE station:

- Volunteer Company 33 - Bella Vista
- Volunteer Company 54 - Lakehead
- Volunteer Company 72 - Jones Valley
- CALFIRE Shasta College, Station 73

Each Volunteer fire company in Battalion 7 has a Type II structure fire engine, Type III wildland fire engine, rescue unit, and water tender. The fire companies are actively involved in training, recruitment, emergency response, facility and equipment maintenance, and fundraising activities. The Battalion starts in the valley, starting at the north side of Redding and extending north to the Siskiyou County line. The entire shoreline of Shasta Lake lies within the Battalion. The area north of Shasta Lake lies within the Federal Direct Protection Area and is administered by the United States Forest Service (USFS), Shasta Trinity National Forest for wildland fires. The USFS has statutory responsibility for wildland fires, but Shasta County Fire Department is responsible for all medical aids, traffic collisions, hazardous conditions, and fires involving structures, vehicles, boats, and other improvements. The Battalion also includes one incorporated city, The City of Shasta Lake, and one fire district, The Mountain Gate Fire Protection District. Shasta County Fire Department has mutual aid agreements with the Shasta Lake City Fire Protection District and Mountain Gate Fire Protection District. This includes responses to structure fires, both residential and commercial, and vehicle accidents. Interstate 5 runs through the middle of the Battalion with high vehicle traffic, especially commercial vehicles. As the interstate leaves the valley and climbs through the Sacramento River canyon, the roadway is affected by the surrounding terrain. This change in the roadway and the potential for rapidly changing weather in the winter can make travel difficult to the northern portion of the Battalion. Shasta County Volunteer Company 54, located in Lakehead, is the only County Fire Station north of Shasta Lake and relies on a response from the valley for all calls, especially accidents and fires. This becomes more problematic when Interstate 5 is closed due to weather and road conditions.

The Battalion also encompasses Shasta Lake and all the improvements on the lake, including the marinas and private residences around the lake and surrounding communities. Some of the residents around the lake require a response by boat due to the inability to access them from poorly maintained roads. The boats are not staffed all the time and require a response from one of the stations to respond from Bridge Bay Marina.

## **SCFD Company 33/72 - Bella Vista/Jones Valley**

Located in the middle of town on Highway 299 East in Bella Vista is Company 33. The Company is staffed by 18 total Volunteers, four of whom reside in Jones Valley. Amanda Peri is the Volunteer

Chief of Company 33/72. With the low Volunteer numbers in Jones Valley in 2022, both Company 33 and 72 were consolidated to better serve the citizens of Jones Valley and Bella Vista. The Company's immediate response area covers about 40 square miles with a population of approximately 2,800. In addition to running calls, Company 33/72 also attended hours of training to acquire skills and knowledge to fight wildland and structure fires and medical emergencies, traffic accidents, public assistance, and hazardous materials.

Company 33 and 72's protection area includes gas stations, restaurants, churches, post office, grocery store, water district office, elementary school, and several other commercial buildings. The response area includes the heavily traveled Highway 299 East. There is also access to Lake Shasta through Dry Creek Road, which accesses two of the marinas on the lake, increasing vehicle traffic in the summer months. Company 33/72 responds closely with Shasta College, Palo Cedro, and Oak Run. In 2023, Companies 33 and 72 responded to 386 incidents in their response area.

### **SCFD Company 54 - Lakehead**

Company 54 is in the center of the Lakehead community and provides service to the County area north of the Pit River Bridge. Company 54 is led by Rick Sealana. Company 54 is supplemented by the SCFD Reserve Program which currently has 4 SCFD Volunteers participating in the program from various SCFD Volunteer Stations. Company 54 provides service to approximately 800 homes with nearly 900 permanent residents. The increased call volume can be attributed to Interstate 5, which runs through the center of the response area. In adverse weather, the call volume increases dramatically on Interstate 5 due to the increase in motor vehicle collisions. In the summer months, the population of Lakehead increases with the visitors to the lake and surrounding forest. The lake and the forest area present the issue of long response time as access by vehicle can be limited. The volunteer recruitment process is active and ongoing in the area to try and increase the volunteer numbers with only four full responders in the company. Calls for service in the Lakehead Community includes sending equipment from the Shasta College Fire Station and mutual aid from Mountain Gate Fire Protection District. Company 54 responded to 169 incidents in 2023, which is high compared to areas with the same population.



# SHASTA CASCADE HAZARDOUS MATERIALS RESPONSE TEAM

The Shasta Cascade Hazardous Materials Response Team (SCHMRT) is in its 24th year of operation. The first Letter of Understanding developing the framework to establish SCHMRT was in November of 1999. On June 1st, 2000, SCHMRT went into service.

The original SCHMRT was made up of dedicated hard-working men and women from several county agencies and jurisdictions. With a limited budget, the tools and equipment were mostly acquired from donations. These tools and equipment were stored in either the old Haz Mat 24 (old box-style ambulance) or Haz Mat 24 Support (8-person style van).

SCHMRT is a multi-agency team and is made up of men and women from Lassen, Modoc, Shasta, Siskiyou, Tehama and Trinity Counties, California Highway Patrol (CHP) Northern Division personnel from Redding Fire Department, and CAL FIRE. SCHMRT has one dedicated hazardous materials vehicle (Haz Mat 24). Haz Mat 24 stores and transports team members, specialized equipment, and tools to hazardous materials incidents/trainings. In 2013, SCHMRT was certified as a Type II Hazardous Materials Team by CAL EMA (California Emergency Management Agency).

The Shasta County Fire Department is the lead agency for SCHMRT. The Team is overseen by a Program Manager and an Operation Director. The Program Manager is CAL FIRE Division Chief Kyle Ferris. The Operation Director is Redding Fire Department Division Chief Eric McMurtrey and Battalion Chief Erick Mattson. SCHMRT is a 40-person Type II Team that provides capabilities to identify and work with known and unknown industrial chemicals, provide air monitoring, work with liquid, vapor, and cryogenic materials, ability to monitor Gamma and Beta radiation, plume air modeling, decontamination of individuals with known and unknown chemicals, provide diking absorption, plugging, and patching of liquids, solids and vapors, and neutralization of chemicals.

Most members on the team are trained to the Hazardous Materials Specialist level (240 hours of training). Funding for the team comes from grants, incident cost recovery, and member agency contributions. Hard work, training, and dedication from team members make SCHMRT what it is today. In 2024, SCHMRT will continue to further educate and train its members during quarterly drills and trainings.

# SHASTA COUNTY FIRE DEPT. BOAT PROGRAM

Lake Shasta is a popular spot for boating, water skiing, camping, house boating, and fishing. Lake Shasta has a surface area of 30,000 acres and 365 miles of shoreline, making it the State's largest reservoir and the third-largest body of water after Lake Tahoe and the Salton Sea. Shasta County Fire Department has three Fire Rescue boats that provide emergency response on Lake Shasta. The Fire Rescue boats respond to water rescues, medical aids, boat collisions, boat fires, vegetation fires, search and rescue, and other calls for service. The Fire Rescue boats are often used on vegetation fires to transport firefighters to areas around the lake inaccessible by roads. The SCFD Boat Program personnel work closely with the Shasta County Sheriff's Boating personnel throughout the entire year, especially during busy holiday weekends and summer months. In 2023, the SCFD Boat Program personnel responded to 23 emergency incidents on Lake Shasta, and personnel completed approximately 300 hours of boat training throughout the year. Both boats are centrally located at the Shasta County Sheriff's Dock at Bridge Bay Marina during the summer months. This allows for a quicker response time due to the central location as well as keeping the boats secure. During winter, one of the boats is left moored at Bridge Bay for emergency response. Personnel once again participated in CALFIRE's 2nd Annual Camp Cinder Program out on Shasta Lake. SCFD Boat Personnel taught 50 teenage girls about water safety over the course of 2 days.



# REDDING AIR ATTACK BASE

The Redding Air Attack Base (RAAB) is under the direct supervision of Battalion Chief Tim Shiffer, and consists of three Fire Captains, one Fire Apparatus Engineer, and seven seasonal Firefighters. The Redding Air Attack Base was established in the late 1960s and is located at the CAL FIRE Northern Operations Center on Airport Road. The RAAB is an interagency base shared by CAL FIRE and the United States Forest Service (USFS).

The complement of aircraft assigned includes Air Attack 240, which is an OV-10 Bronco used as a tactical command aerial firefighting aircraft, and two S-2T air tankers, T-94 and T-95. These air tankers can carry 1,200 gallons of fire retardant. Also assigned to the base on occasion is Air Attack 2CG, a Cessna Citation 550. This aircraft is used as a training platform for new Air Tactical Group Supervisor (ATGS) students. RAAB also had a Sikorski Sky crane 16HT on Exclusive use contract for immediate response to fires.

RAAB has a vast response area, which spans from Red Bluff to the Oregon Border, and from Hayfork to Mt. Lassen. CAL FIRE has strategically located its air resources throughout California, with the goal of providing air resources to any fire incident within 20 minutes.

In 2023 the aircraft based at RAAB delivered a total of 173,867 gallons of retardant. The most retardant delivered in a single season was 3,010,235 gallons during the 2021 fire season. The highest one-day total on record for retardant delivered occurred in 1999, when the base delivered 290,000 gallons of retardant while supporting the Jones Fire in the Bella Vista area. In 2023, Air Attack 240 provided 131 flight hours over fires, Tanker 94 delivered 46,763 gallons of retardant with 65 flight hours, and Tanker 95 delivered 62,246 gallons of retardant with 72 flight hours. RAAB responded to 56 calls for service.

Here are the Redding Air Attack Base's totals for retardant delivered for the past six fire seasons:

2018 -- 2,769,167 gallons

2019 -- 1,365,161 gallons

2020 -- 2,302,216 gallons

2021 -- 3,010,235 gallons

2022 -- 1,135,536 gallons

2023 -- 173,867 gallons



# SHASTA COUNTY FIRE DEPT.

## EMS

The Shasta County Fire Department (SCFD) and CAL FIRE Shasta-Trinity Unit (SHU) Emergency Medical Services (EMS) Program is overseen by Training Fire Captain - EMS Coordinator, Marcus Smith. SCFD/SHU responds to all medical aid incidents outside of incorporated cities and districts within Shasta County. Shasta County falls within the Sierra-Sacramento Valley (S-SV) Local Emergency Medical Service Agency (LEMSA). S-SV dictates the policy and procedures for how medical emergencies are handled and equipment is used. The SCFD/SHU EMS Coordinator is the point of contact for S-SV, as well as ensuring all EMS training, equipment purchasing, and record compliance is completed and maintained.

In 2023, SCFD responded to approximately 3,181 medical calls and 391 traffic collisions. Approximately 834 of these calls were in the outer lying areas of Shasta County. These outer lying areas are where ambulance response times are the longest, on average over 30-minutes. This requires responders to evaluate and care for patients for an extended period, requiring them to be proficient in their knowledge, skills, and abilities. SCFD dedicates two and a half months of drill time, every year, to EMS training delivering, over 1,000 hours of EMS instruction. Each year sees new challenges in the EMS field, ranging from increased/updated skills to new products to improve patient care. This past year, to better serve the communities and citizens in Shasta County, SCFD has assisted in the re-write to S-SSV policy regarding Alternate Use Transport Vehicles (AUTV). The Department has seven approved rescues identified as AUTVs, these vehicles are a specialized type of rescue that can transport patients to medical helicopter landing zones and more accessible areas for the responding transport ambulance to receive the patient and in turn transport them to the nearest medical facility. These AUTV also carry specialized rescue equipment for traffic collisions and technical rescue incidents. In 2023, SCFD participated in the triennial airport disaster drill at the Redding Municipal Airport. After significant work in 2023, we have established a Memorandum of Understanding (MOU) identifying Mercy Medical Center Redding as our new base hospital and one of their staff (emergency room doctor) as our centralized Medical Director, this enables personnel to receive medical direction and provides EMS supplies, both Basic and Advance Life Support, for our EMS Responders under the umbrella of SCFD.





THIS REPORT HAS BEEN PREPARED BY THE  
CAL FIRE/SHASTA COUNTY FIRE DEPARTMENT

---

WWW.SHASTACOUNTYFIRE.ORG  
2023